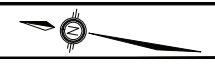
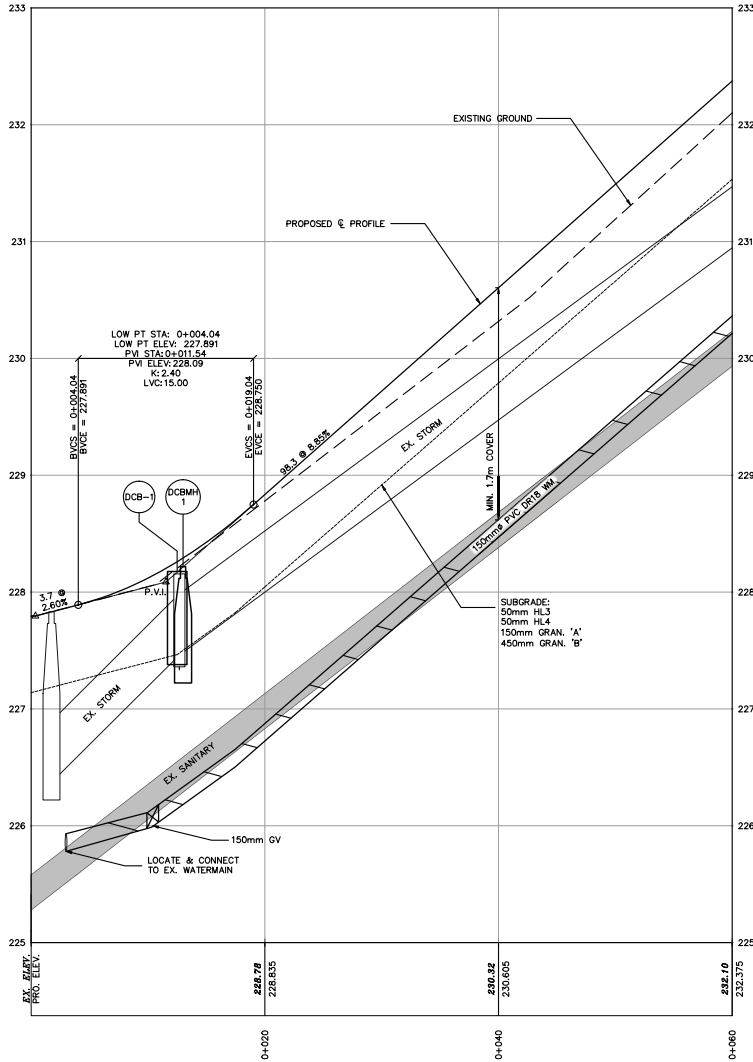


DCBMH-1 (NEW)
 STA.: 0+013
 OFFSET: -3.85m
 OPSD-701.011
 T/G=228.22
 N. INV.=227.46 (EX.)
 S. INV.=227.46 (EX.)

DCB-1 (NEW)
 STA.: 0+012.50
 OFFSET: 4.00m
 OPSD-705.020
 T/G=228.18
 E. INV.=228.71 (EX.)
 SE. INV.=227.32 (EX.)



NOTES:

1. THE LOCATION OF EXISTING WATER SERVICES ARE SHOWN SCHEMATICALLY ONLY. CONTRACTOR IS TO FIELD LOCATE WATER SERVICE AT PROPERTY LINE BEFORE CONNECTING NEW SERVICE TO MAIN.
2. EXISTING UNDERGROUND BELL, TELEPHONE AND UNION GAS LOCATIONS ARE APPROXIMATE ONLY AND BASED ON BELL, CANADA AND UNION GAS OFFICE RECORDS AND NOT ON ACTUAL FIELD LOCATES.
3. EXISTING SANITARY SEWER SERVICE LATERALS ARE NOT SHOWN ON PLAN AND ARE TO BE LOCATED BEFORE DIGGING BEGINS.
4. CONTRACTOR TO PROVIDE EROSION PROTECTION AND SILT CONTAINMENT AT ALL CATCH BASINS.
5. CONTRACTOR TO LOCATE ALL CURBSTOPS, REMOVE & REPLACE EXISTING SERVICE TO PROPERTY LINE, AS DIRECTED.
6. CONTRACTOR TO REPLACE WITH NEW, ALL STRUCTURE FRAMES, GRATES & COVERS (CB'S, STORM & SANITARY MH'S) AND ADJUST TO NEW GRADES.
7. CONTRACTOR TO CONNECT ALL EXISTING BIG "O" YARD DRAINS TO ROAD SUB-DRAIN, AS DIRECTED.



City of Owen Sound

BM#72U267 ELEV=178.479
 BLACK CLAWSON KENNEDY, A BRICK BUILDING ON 1 AVENUE WEST OPPOSITE C.N. STATION, TABLE IN NORTHEAST CONCRETE FOUNDATION, 6.83m SOUTHWEST OF NORTH CORNER, 90cm BELOW BRICKWORK AND 87cm SOUTHWEST OF SOUTHEAST EDGE OF A LARGE DOOR. TBM: TOP OF FLANGE FIRE HYDRANT 2D125 LOCATED ADJACENT TO #900 10TH AVENUE EAST ELEV=243.76.

CAUTION:
 THE POSITION OF POLE LINES, CONDUITS, WATERMANS, SEWERS AND OTHER UNDERGROUND AND OVERGROUND UTILITIES AND STRUCTURES IS NOT NECESSARILY SHOWN ON THE CONTRACT DRAWINGS, AND, WHERE SHOWN, THE ACCURACY OF THE POSITION OF SUCH UTILITIES AND STRUCTURES IS NOT GUARANTEED. BEFORE STARTING WORK, THE CONTRACTOR SHALL INFORM HIMSELF OF THE EXACT LOCATION OF ALL SUCH UTILITIES AND STRUCTURES, AND SHALL ASSUME ALL LIABILITY FOR DAMAGE TO THEM.

09/02/24	TENDER ISSUE
09/01/27	CITY REVIEW
YY/MM/DD	DESCRIPTION
DATE	REVISION / ISSUE

Seal not valid unless signed and dated

HP GENTVAR
HENDERSON PADDON
 & ASSOCIATES (A Division of GENTVAR Consultants LP)
CIVIL & ENVIRONMENTAL ENGINEERING CONSULTANTS
 OWEN SOUND • THE BLUE MOUNTAINS • GRIMSBY • HANOVER
 PHONE (519) 376-7612 SINCE 1972

Title:
**PLAN AND PROFILE
 STA. 0+000 TO STA. 0+060
 10TH AVENUE EAST
 ROAD RECONSTRUCTION**

Client:	CITY OF OWEN SOUND	
Design:	AAG	Scale: H 1:250 V 1:25
Drawn:	AAG	H 1:500 V 1:50
Checked:	QLP	Approved:
Date:	JAN. 2009	

DRAWING No. **100067-03** Design Engineer